



# Demographic and Income Comparison Profile

221 Clarkson Executive Park, Ballwin, Missouri, 63011  
Rings: 1, 3, 5 mile radii

Prepared by Esri  
Latitude: 38.60055  
Longitude: -90.58619

	1 mile	3 miles	5 miles
<b>Census 2010 Summary</b>			
Population	7,011	69,556	141,242
Households	2,886	25,557	53,572
Families	2,013	19,654	39,743
Average Household Size	2.39	2.70	2.61
Owner Occupied Housing Units	2,341	22,013	44,576
Renter Occupied Housing Units	545	3,544	8,996
Median Age	45.5	42.1	42.4
<b>2020 Summary</b>			
Population	7,011	70,508	143,810
Households	2,897	26,037	54,940
Families	1,997	19,817	40,202
Average Household Size	2.38	2.69	2.59
Owner Occupied Housing Units	2,245	21,692	43,905
Renter Occupied Housing Units	652	4,346	11,035
Median Age	48.4	44.4	44.7
Median Household Income	\$90,878	\$112,432	\$110,230
Average Household Income	\$132,582	\$152,251	\$151,670
<b>2025 Summary</b>			
Population	7,041	71,091	145,542
Households	2,910	26,270	55,748
Families	1,998	19,931	40,565
Average Household Size	2.38	2.69	2.58
Owner Occupied Housing Units	2,256	21,890	44,282
Renter Occupied Housing Units	654	4,380	11,466
Median Age	49.3	45.3	45.5
Median Household Income	\$101,905	\$122,027	\$118,840
Average Household Income	\$148,922	\$170,930	\$169,570
<b>Trends: 2020-2025 Annual Rate</b>			
Population	0.09%	0.16%	0.24%
Households	0.09%	0.18%	0.29%
Families	0.01%	0.11%	0.18%
Owner Households	0.10%	0.18%	0.17%
Median Household Income	2.32%	1.65%	1.52%

Source: U.S. Census Bureau, Census 2010 Summary File 1. Esri forecasts for 2020 and 2025.



# Demographic and Income Comparison Profile

221 Clarkson Executive Park, Ballwin, Missouri, 63011  
Rings: 1, 3, 5 mile radii

Prepared by Esri  
Latitude: 38.60055  
Longitude: -90.58619

2020 Households by Income	1 mile		3 miles		5 miles	
	Number	Percent	Number	Percent	Number	Percent
<\$15,000	103	3.6%	739	2.8%	1,919	3.5%
\$15,000 - \$24,999	195	6.7%	934	3.6%	2,057	3.7%
\$25,000 - \$34,999	174	6.0%	1,231	4.7%	2,603	4.7%
\$35,000 - \$49,999	313	10.8%	2,003	7.7%	4,416	8.0%
\$50,000 - \$74,999	422	14.6%	3,296	12.7%	6,961	12.7%
\$75,000 - \$99,999	350	12.1%	2,914	11.2%	6,173	11.2%
\$100,000 - \$149,999	561	19.4%	5,611	21.6%	11,704	21.3%
\$150,000 - \$199,999	275	9.5%	3,712	14.3%	7,219	13.1%
\$200,000+	506	17.5%	5,597	21.5%	11,888	21.6%
Median Household Income	\$90,878		\$112,432		\$110,230	
Average Household Income	\$132,582		\$152,251		\$151,670	
Per Capita Income	\$53,589		\$56,770		\$57,945	

2025 Households by Income	1 mile		3 miles		5 miles	
	Number	Percent	Number	Percent	Number	Percent
<\$15,000	90	3.1%	666	2.5%	1,735	3.1%
\$15,000 - \$24,999	167	5.7%	814	3.1%	1,813	3.3%
\$25,000 - \$34,999	155	5.3%	1,117	4.3%	2,359	4.2%
\$35,000 - \$49,999	282	9.7%	1,816	6.9%	4,025	7.2%
\$50,000 - \$74,999	383	13.2%	2,959	11.3%	6,344	11.4%
\$75,000 - \$99,999	343	11.8%	2,773	10.6%	5,989	10.7%
\$100,000 - \$149,999	596	20.5%	5,506	21.0%	11,716	21.0%
\$150,000 - \$199,999	309	10.6%	3,956	15.1%	7,737	13.9%
\$200,000+	585	20.1%	6,663	25.4%	14,029	25.2%
Median Household Income	\$101,905		\$122,027		\$118,840	
Average Household Income	\$148,922		\$170,930		\$169,570	
Per Capita Income	\$60,184		\$63,796		\$64,945	

**Data Note:** Income is expressed in current dollars.

**Source:** U.S. Census Bureau, Census 2010 Summary File 1. Esri forecasts for 2020 and 2025.



# Demographic and Income Comparison Profile

221 Clarkson Executive Park, Ballwin, Missouri, 63011  
Rings: 1, 3, 5 mile radii

Prepared by Esri  
Latitude: 38.60055  
Longitude: -90.58619

2010 Population by Age	1 mile		3 miles		5 miles	
	Number	Percent	Number	Percent	Number	Percent
Age 0 - 4	322	4.6%	3,677	5.3%	7,297	5.2%
Age 5 - 9	459	6.5%	5,189	7.5%	10,098	7.1%
Age 10 - 14	516	7.4%	5,966	8.6%	11,536	8.2%
Age 15 - 19	457	6.5%	5,174	7.4%	10,055	7.1%
Age 20 - 24	277	3.9%	2,797	4.0%	6,001	4.2%
Age 25 - 34	576	8.2%	5,596	8.0%	12,445	8.8%
Age 35 - 44	838	11.9%	9,461	13.6%	18,615	13.2%
Age 45 - 54	1,183	16.9%	12,474	17.9%	24,808	17.6%
Age 55 - 64	949	13.5%	9,631	13.8%	19,539	13.8%
Age 65 - 74	591	8.4%	5,149	7.4%	10,867	7.7%
Age 75 - 84	500	7.1%	3,115	4.5%	6,710	4.8%
Age 85+	344	4.9%	1,327	1.9%	3,270	2.3%

2020 Population by Age	1 mile		3 miles		5 miles	
	Number	Percent	Number	Percent	Number	Percent
Age 0 - 4	298	4.3%	3,412	4.8%	6,769	4.7%
Age 5 - 9	348	5.0%	4,090	5.8%	8,146	5.7%
Age 10 - 14	434	6.2%	4,975	7.1%	9,949	6.9%
Age 15 - 19	445	6.3%	4,991	7.1%	9,727	6.8%
Age 20 - 24	300	4.3%	3,361	4.8%	6,798	4.7%
Age 25 - 34	640	9.1%	7,203	10.2%	14,752	10.3%
Age 35 - 44	765	10.9%	7,732	11.0%	16,291	11.3%
Age 45 - 54	919	13.1%	10,123	14.4%	20,239	14.1%
Age 55 - 64	1,134	16.2%	11,247	16.0%	22,460	15.6%
Age 65 - 74	852	12.2%	7,872	11.2%	16,133	11.2%
Age 75 - 84	487	6.9%	3,749	5.3%	8,339	5.8%
Age 85+	388	5.5%	1,754	2.5%	4,209	2.9%

2025 Population by Age	1 mile		3 miles		5 miles	
	Number	Percent	Number	Percent	Number	Percent
Age 0 - 4	294	4.2%	3,408	4.8%	6,808	4.7%
Age 5 - 9	361	5.1%	4,029	5.7%	8,083	5.6%
Age 10 - 14	393	5.6%	4,637	6.5%	9,196	6.3%
Age 15 - 19	385	5.5%	4,346	6.1%	8,632	5.9%
Age 20 - 24	278	3.9%	2,987	4.2%	6,216	4.3%
Age 25 - 34	630	9.0%	7,157	10.1%	14,715	10.1%
Age 35 - 44	819	11.6%	8,716	12.3%	18,179	12.5%
Age 45 - 54	839	11.9%	9,091	12.8%	18,516	12.7%
Age 55 - 64	1,090	15.5%	10,788	15.2%	21,410	14.7%
Age 65 - 74	960	13.6%	9,023	12.7%	18,308	12.6%
Age 75 - 84	616	8.8%	5,019	7.1%	10,887	7.5%
Age 85+	374	5.3%	1,891	2.7%	4,591	3.2%

Source: U.S. Census Bureau, Census 2010 Summary File 1. Esri forecasts for 2020 and 2025.



# Demographic and Income Comparison Profile

221 Clarkson Executive Park, Ballwin, Missouri, 63011  
Rings: 1, 3, 5 mile radii

Prepared by Esri  
Latitude: 38.60055  
Longitude: -90.58619

2010 Race and Ethnicity	1 mile		3 miles		5 miles	
	Number	Percent	Number	Percent	Number	Percent
White Alone	6,406	91.4%	62,819	90.3%	125,310	88.7%
Black Alone	115	1.6%	1,426	2.1%	3,253	2.3%
American Indian Alone	12	0.2%	130	0.2%	245	0.2%
Asian Alone	312	4.5%	3,723	5.4%	9,335	6.6%
Pacific Islander Alone	1	0.0%	20	0.0%	32	0.0%
Some Other Race Alone	43	0.6%	367	0.5%	805	0.6%
Two or More Races	122	1.7%	1,072	1.5%	2,263	1.6%
Hispanic Origin (Any Race)	180	2.6%	1,616	2.3%	3,533	2.5%

2020 Race and Ethnicity	Number		Percent		Number		Percent	
	Number	Percent	Number	Percent	Number	Percent	Number	Percent
White Alone	6,170	88.0%	61,069	86.6%	121,653	84.6%		
Black Alone	152	2.2%	1,900	2.7%	4,280	3.0%		
American Indian Alone	13	0.2%	135	0.2%	254	0.2%		
Asian Alone	440	6.3%	5,314	7.5%	13,197	9.2%		
Pacific Islander Alone	1	0.0%	20	0.0%	32	0.0%		
Some Other Race Alone	54	0.8%	475	0.7%	1,056	0.7%		
Two or More Races	181	2.6%	1,596	2.3%	3,337	2.3%		
Hispanic Origin (Any Race)	238	3.4%	2,155	3.1%	4,722	3.3%		

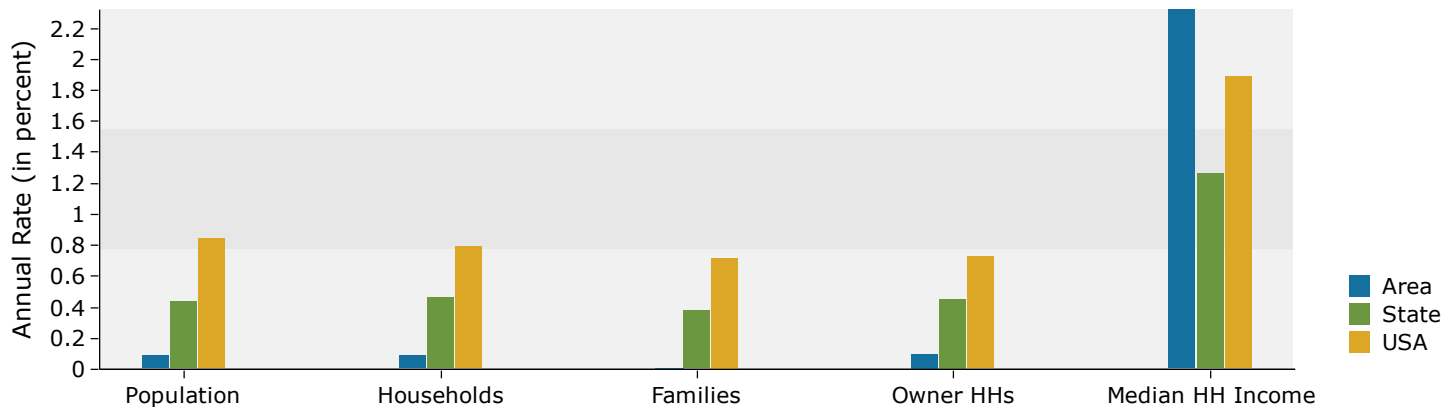
  

2025 Race and Ethnicity	Number		Percent		Number		Percent	
	Number	Percent	Number	Percent	Number	Percent	Number	Percent
White Alone	6,036	85.7%	59,823	84.1%	119,137	81.9%		
Black Alone	178	2.5%	2,217	3.1%	4,978	3.4%		
American Indian Alone	13	0.2%	138	0.2%	262	0.2%		
Asian Alone	528	7.5%	6,386	9.0%	15,809	10.9%		
Pacific Islander Alone	1	0.0%	20	0.0%	32	0.0%		
Some Other Race Alone	65	0.9%	565	0.8%	1,275	0.9%		
Two or More Races	221	3.1%	1,942	2.7%	4,049	2.8%		
Hispanic Origin (Any Race)	282	4.0%	2,554	3.6%	5,631	3.9%		

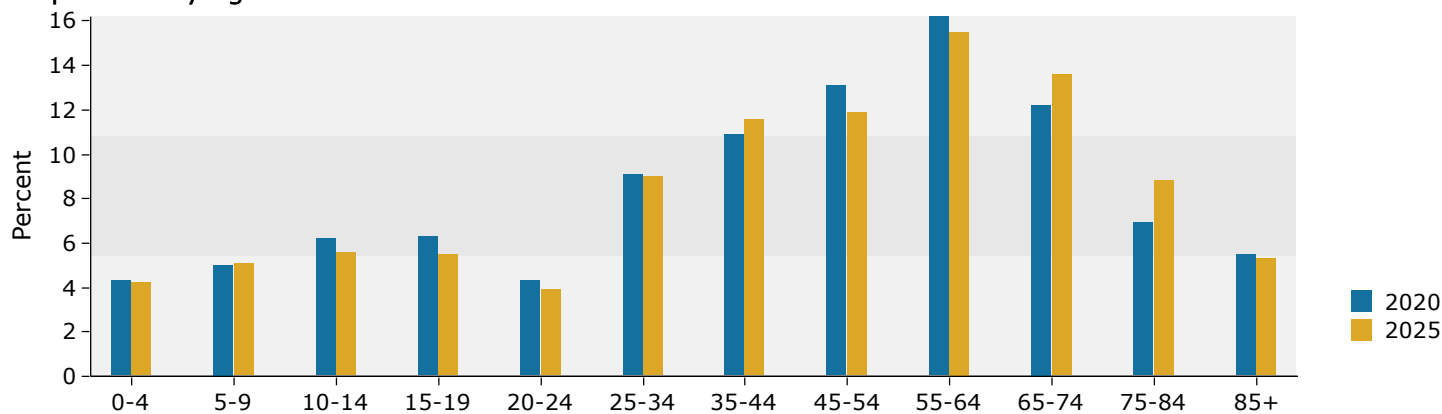
Source: U.S. Census Bureau, Census 2010 Summary File 1. Esri forecasts for 2020 and 2025.

## 1 mile

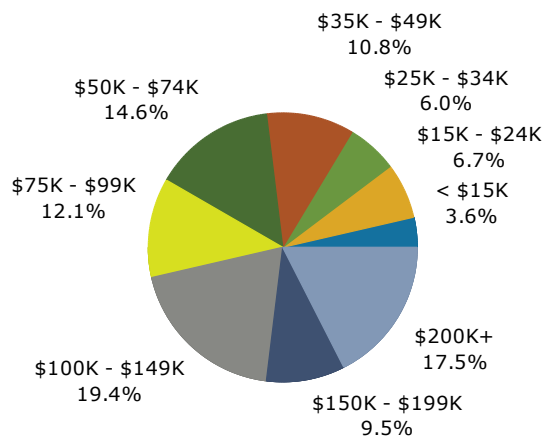
### Trends 2020-2025



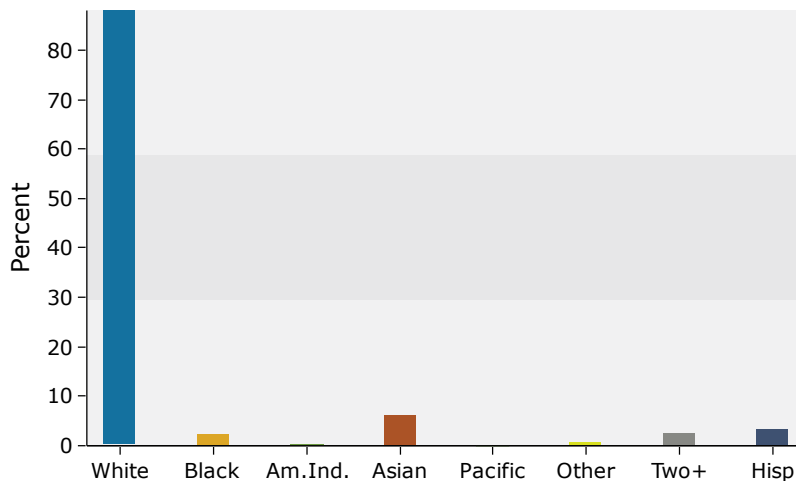
### Population by Age



### 2020 Household Income



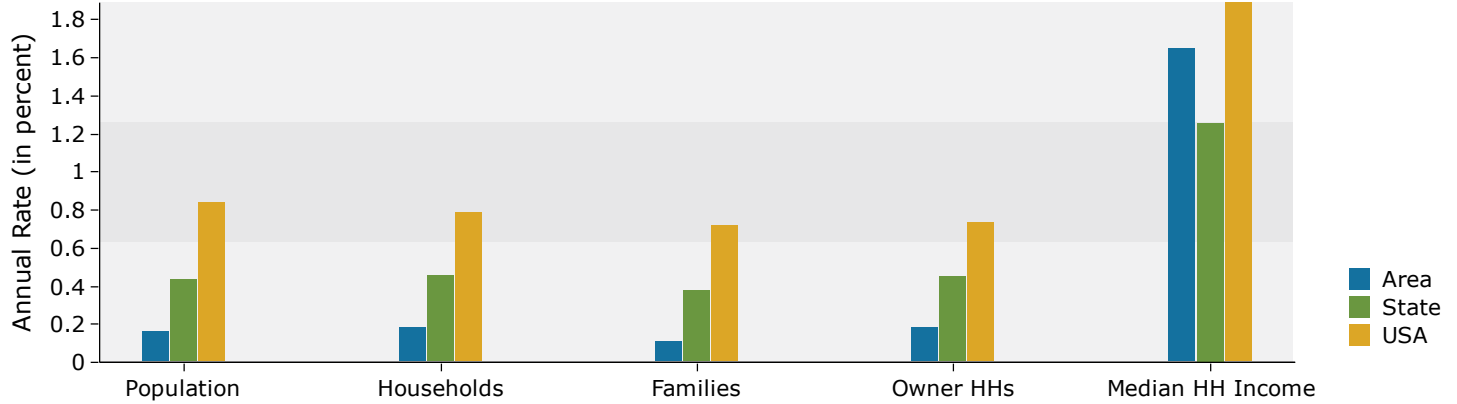
### 2020 Population by Race



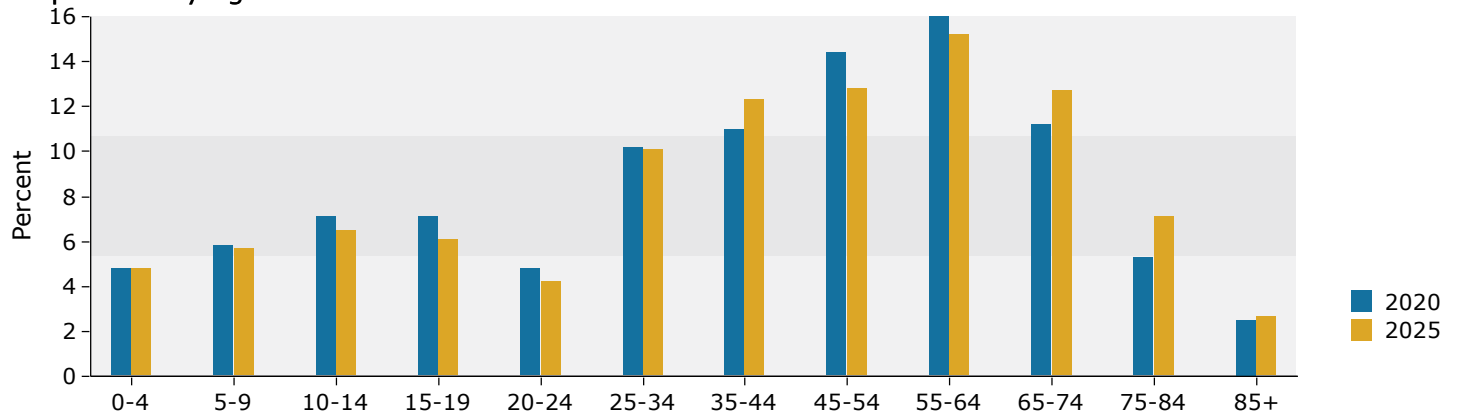
Source: U.S. Census Bureau, Census 2010 Summary File 1. Esri forecasts for 2020 and 2025.

## 3 miles

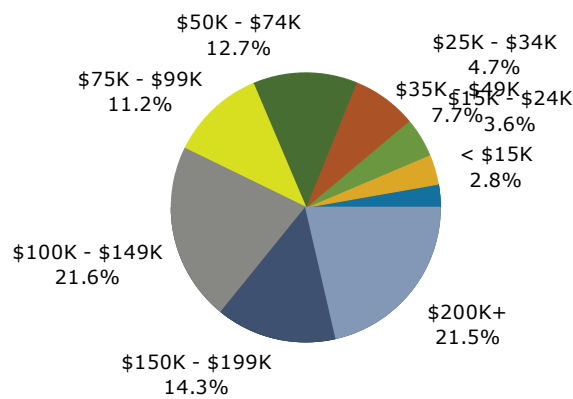
### Trends 2020-2025



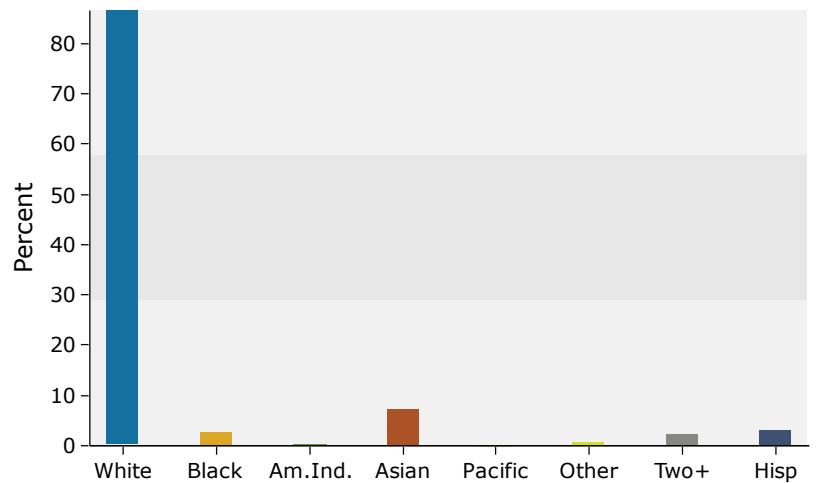
### Population by Age



### 2020 Household Income



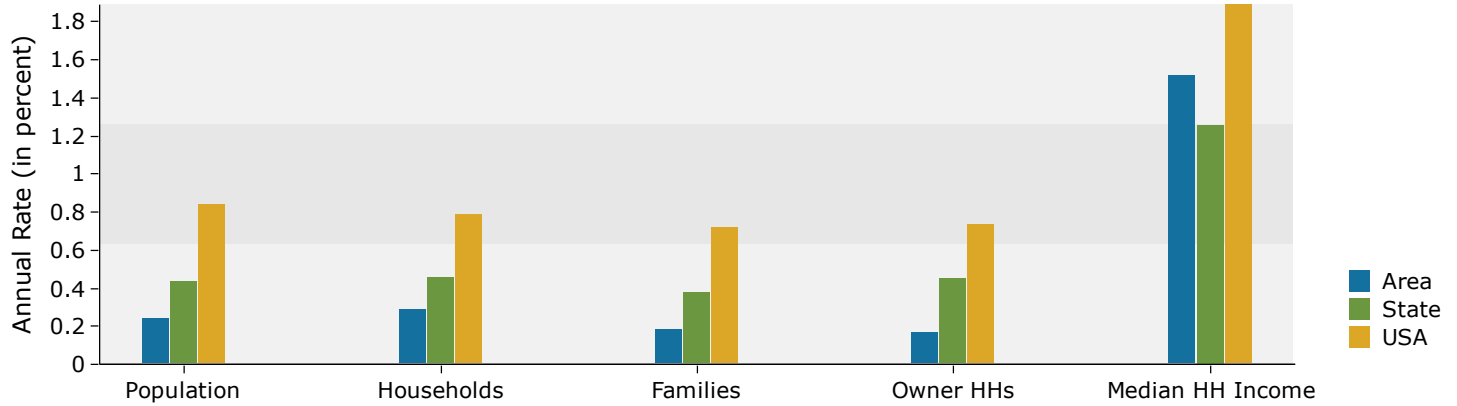
### 2020 Population by Race



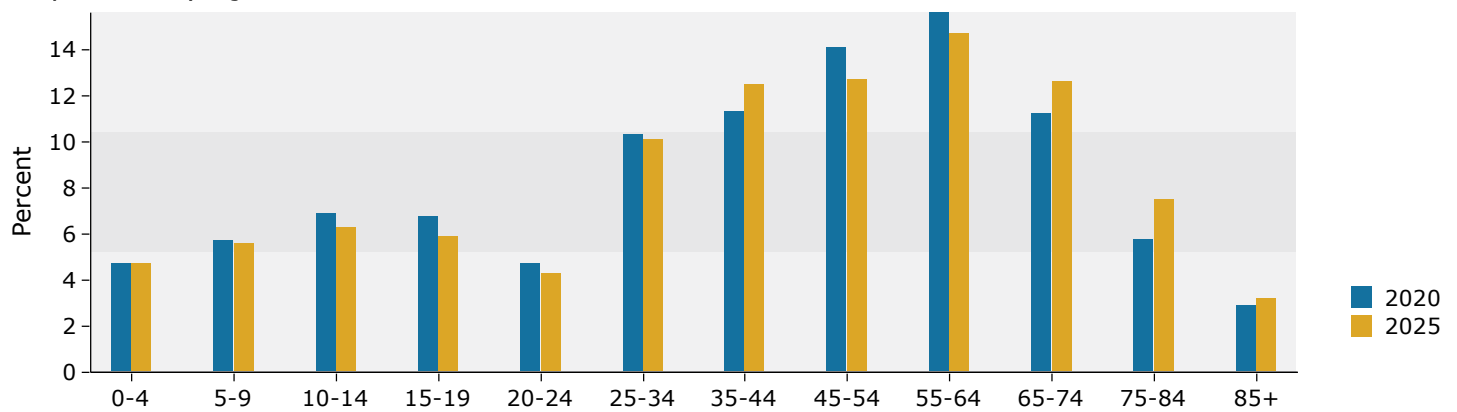
Source: U.S. Census Bureau, Census 2010 Summary File 1. Esri forecasts for 2020 and 2025.

## 5 miles

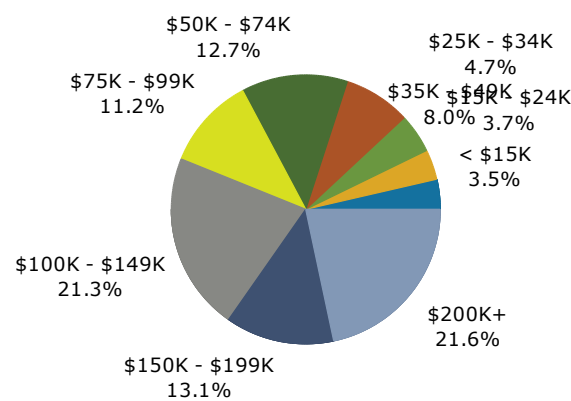
### Trends 2020-2025



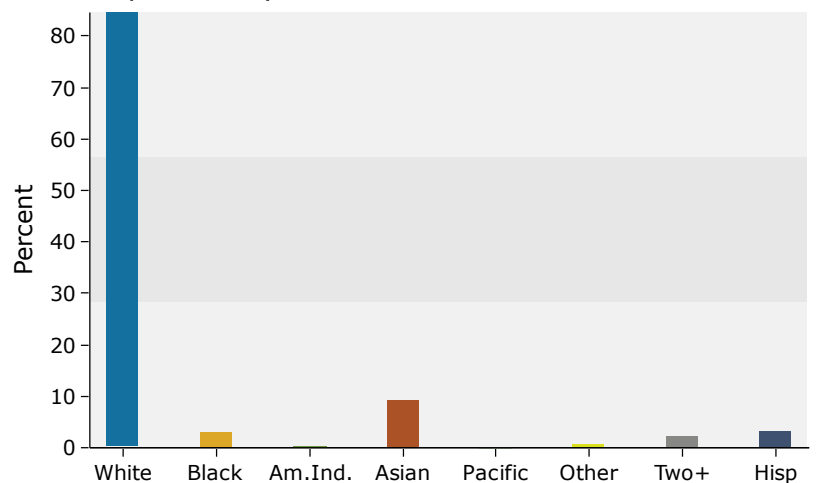
### Population by Age



### 2020 Household Income



### 2020 Population by Race



Source: U.S. Census Bureau, Census 2010 Summary File 1. Esri forecasts for 2020 and 2025.