



Demographic and Income Comparison Profile

32 Front St, Valley Park, Missouri, 63088
Rings: 1, 3, 5 mile radii

Prepared by Esri
Latitude: 38.54924
Longitude: -90.49178

	1 mile	3 miles	5 miles
Census 2010 Summary			
Population	5,088	58,760	141,364
Households	2,086	23,336	55,636
Families	1,144	16,033	39,079
Average Household Size	2.41	2.50	2.52
Owner Occupied Housing Units	1,387	18,080	44,945
Renter Occupied Housing Units	699	5,256	10,691
Median Age	34.5	39.0	40.6
2019 Summary			
Population	5,357	59,882	144,944
Households	2,180	23,750	56,964
Families	1,172	16,084	39,524
Average Household Size	2.43	2.51	2.52
Owner Occupied Housing Units	1,333	17,417	43,783
Renter Occupied Housing Units	847	6,333	13,181
Median Age	36.4	40.3	42.1
Median Household Income	\$62,617	\$83,150	\$87,028
Average Household Income	\$84,570	\$109,475	\$119,283
2024 Summary			
Population	5,474	61,014	147,403
Households	2,222	24,188	57,891
Families	1,187	16,289	39,979
Average Household Size	2.44	2.51	2.52
Owner Occupied Housing Units	1,375	17,707	44,670
Renter Occupied Housing Units	847	6,482	13,221
Median Age	36.5	41.4	43.0
Median Household Income	\$74,714	\$97,917	\$100,752
Average Household Income	\$102,348	\$128,442	\$136,806
Trends: 2019-2024 Annual Rate			
Population	0.43%	0.38%	0.34%
Households	0.38%	0.37%	0.32%
Families	0.25%	0.25%	0.23%
Owner Households	0.62%	0.33%	0.40%
Median Household Income	3.60%	3.32%	2.97%

Source: U.S. Census Bureau, Census 2010 Summary File 1. Esri forecasts for 2019 and 2024.



Demographic and Income Comparison Profile

32 Front St, Valley Park, Missouri, 63088
Rings: 1, 3, 5 mile radii

Prepared by Esri
Latitude: 38.54924
Longitude: -90.49178

2019 Households by Income	1 mile		3 miles		5 miles	
	Number	Percent	Number	Percent	Number	Percent
<\$15,000	124	5.7%	995	4.2%	2,326	4.1%
\$15,000 - \$24,999	154	7.1%	1,097	4.6%	2,833	5.0%
\$25,000 - \$34,999	150	6.9%	1,507	6.3%	3,449	6.1%
\$35,000 - \$49,999	318	14.6%	2,310	9.7%	5,430	9.5%
\$50,000 - \$74,999	560	25.7%	4,592	19.3%	10,012	17.6%
\$75,000 - \$99,999	285	13.1%	3,486	14.7%	8,031	14.1%
\$100,000 - \$149,999	353	16.2%	4,815	20.3%	11,386	20.0%
\$150,000 - \$199,999	114	5.2%	2,446	10.3%	5,908	10.4%
\$200,000+	123	5.6%	2,502	10.5%	7,589	13.3%
Median Household Income	\$62,617		\$83,150		\$87,028	
Average Household Income	\$84,570		\$109,475		\$119,283	
Per Capita Income	\$36,912		\$43,489		\$46,845	

2024 Households by Income	1 mile		3 miles		5 miles	
	Number	Percent	Number	Percent	Number	Percent
<\$15,000	84	3.8%	698	2.9%	1,686	2.9%
\$15,000 - \$24,999	123	5.5%	873	3.6%	2,324	4.0%
\$25,000 - \$34,999	117	5.3%	1,167	4.8%	2,742	4.7%
\$35,000 - \$49,999	274	12.3%	1,985	8.2%	4,787	8.3%
\$50,000 - \$74,999	517	23.3%	4,214	17.4%	9,303	16.1%
\$75,000 - \$99,999	297	13.4%	3,377	14.0%	7,806	13.5%
\$100,000 - \$149,999	454	20.4%	5,315	22.0%	12,397	21.4%
\$150,000 - \$199,999	181	8.1%	3,282	13.6%	7,627	13.2%
\$200,000+	175	7.9%	3,278	13.6%	9,217	15.9%
Median Household Income	\$74,714		\$97,917		\$100,752	
Average Household Income	\$102,348		\$128,442		\$136,806	
Per Capita Income	\$44,593		\$50,988		\$53,699	

Data Note: Income is expressed in current dollars.

Source: U.S. Census Bureau, Census 2010 Summary File 1. Esri forecasts for 2019 and 2024.



Demographic and Income Comparison Profile

32 Front St, Valley Park, Missouri, 63088
Rings: 1, 3, 5 mile radii

Prepared by Esri
Latitude: 38.54924
Longitude: -90.49178

2010 Population by Age	1 mile		3 miles		5 miles	
	Number	Percent	Number	Percent	Number	Percent
Age 0 - 4	382	7.5%	3,650	6.2%	8,435	6.0%
Age 5 - 9	329	6.5%	4,029	6.9%	9,672	6.8%
Age 10 - 14	276	5.4%	4,087	7.0%	10,036	7.1%
Age 15 - 19	248	4.9%	3,733	6.4%	9,292	6.6%
Age 20 - 24	351	6.9%	3,292	5.6%	6,955	4.9%
Age 25 - 34	1,007	19.8%	7,583	12.9%	16,224	11.5%
Age 35 - 44	719	14.1%	7,886	13.4%	18,596	13.2%
Age 45 - 54	695	13.7%	9,703	16.5%	23,607	16.7%
Age 55 - 64	478	9.4%	7,876	13.4%	19,245	13.6%
Age 65 - 74	265	5.2%	3,655	6.2%	10,157	7.2%
Age 75 - 84	214	4.2%	2,163	3.7%	6,217	4.4%
Age 85+	125	2.5%	1,103	1.9%	2,928	2.1%

2019 Population by Age	1 mile		3 miles		5 miles	
	Number	Percent	Number	Percent	Number	Percent
Age 0 - 4	341	6.4%	3,344	5.6%	7,804	5.4%
Age 5 - 9	340	6.3%	3,657	6.1%	8,708	6.0%
Age 10 - 14	333	6.2%	3,970	6.6%	9,763	6.7%
Age 15 - 19	277	5.2%	3,582	6.0%	8,974	6.2%
Age 20 - 24	365	6.8%	3,184	5.3%	7,276	5.0%
Age 25 - 34	907	16.9%	7,927	13.2%	17,056	11.8%
Age 35 - 44	779	14.5%	7,765	13.0%	17,942	12.4%
Age 45 - 54	654	12.2%	7,720	12.9%	19,084	13.2%
Age 55 - 64	601	11.2%	8,470	14.1%	21,346	14.7%
Age 65 - 74	379	7.1%	6,044	10.1%	15,543	10.7%
Age 75 - 84	235	4.4%	2,822	4.7%	7,718	5.3%
Age 85+	144	2.7%	1,398	2.3%	3,729	2.6%

2024 Population by Age	1 mile		3 miles		5 miles	
	Number	Percent	Number	Percent	Number	Percent
Age 0 - 4	350	6.4%	3,393	5.6%	7,898	5.4%
Age 5 - 9	333	6.1%	3,606	5.9%	8,637	5.9%
Age 10 - 14	321	5.9%	3,797	6.2%	9,314	6.3%
Age 15 - 19	300	5.5%	3,522	5.8%	8,802	6.0%
Age 20 - 24	376	6.9%	3,148	5.2%	7,045	4.8%
Age 25 - 34	948	17.3%	7,674	12.6%	16,773	11.4%
Age 35 - 44	741	13.5%	8,411	13.8%	19,237	13.1%
Age 45 - 54	657	12.0%	7,339	12.0%	18,194	12.3%
Age 55 - 64	587	10.7%	7,756	12.7%	19,710	13.4%
Age 65 - 74	430	7.9%	6,892	11.3%	17,562	11.9%
Age 75 - 84	282	5.2%	3,928	6.4%	10,149	6.9%
Age 85+	149	2.7%	1,550	2.5%	4,081	2.8%

Source: U.S. Census Bureau, Census 2010 Summary File 1. Esri forecasts for 2019 and 2024.



Demographic and Income Comparison Profile

32 Front St, Valley Park, Missouri, 63088
Rings: 1, 3, 5 mile radii

Prepared by Esri
Latitude: 38.54924
Longitude: -90.49178

2010 Race and Ethnicity	1 mile		3 miles		5 miles	
	Number	Percent	Number	Percent	Number	Percent
White Alone	4,414	86.8%	52,398	89.2%	127,761	90.4%
Black Alone	205	4.0%	1,388	2.4%	3,270	2.3%
American Indian Alone	17	0.3%	97	0.2%	275	0.2%
Asian Alone	248	4.9%	3,264	5.6%	6,570	4.6%
Pacific Islander Alone	1	0.0%	20	0.0%	43	0.0%
Some Other Race Alone	79	1.6%	516	0.9%	964	0.7%
Two or More Races	123	2.4%	1,077	1.8%	2,481	1.8%
Hispanic Origin (Any Race)	168	3.3%	1,643	2.8%	3,378	2.4%

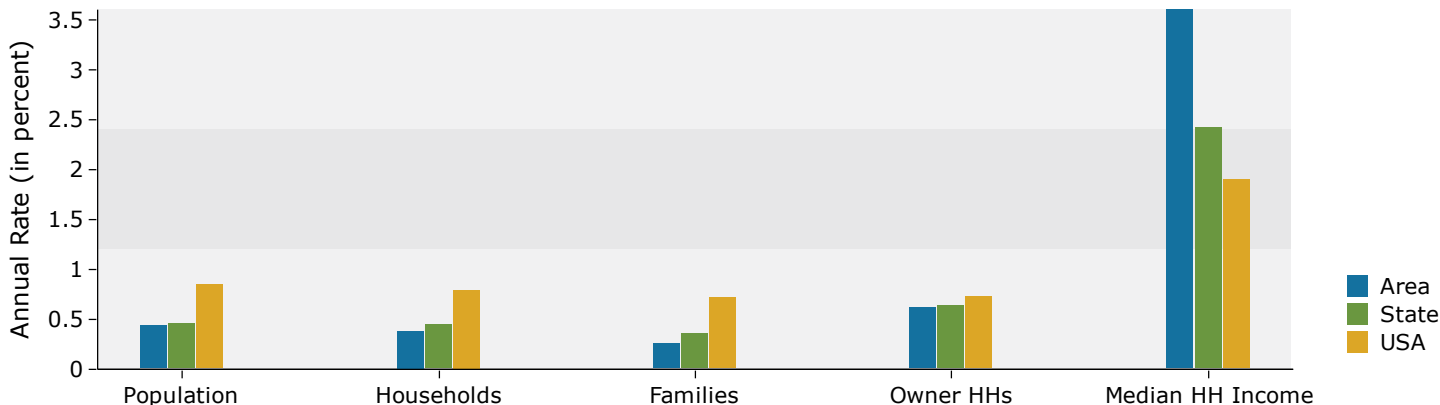
2019 Race and Ethnicity	1 mile		3 miles		5 miles	
	Number	Percent	Number	Percent	Number	Percent
White Alone	4,426	82.6%	51,292	85.7%	126,444	87.2%
Black Alone	279	5.2%	1,799	3.0%	4,272	2.9%
American Indian Alone	19	0.4%	100	0.2%	285	0.2%
Asian Alone	342	6.4%	4,449	7.4%	9,065	6.3%
Pacific Islander Alone	1	0.0%	20	0.0%	45	0.0%
Some Other Race Alone	108	2.0%	677	1.1%	1,260	0.9%
Two or More Races	182	3.4%	1,545	2.6%	3,573	2.5%
Hispanic Origin (Any Race)	233	4.3%	2,162	3.6%	4,486	3.1%

2024 Race and Ethnicity	1 mile		3 miles		5 miles	
	Number	Percent	Number	Percent	Number	Percent
White Alone	4,358	79.6%	50,741	83.2%	125,275	85.0%
Black Alone	331	6.0%	2,119	3.5%	5,021	3.4%
American Indian Alone	18	0.3%	98	0.2%	290	0.2%
Asian Alone	409	7.5%	5,329	8.7%	10,889	7.4%
Pacific Islander Alone	1	0.0%	21	0.0%	47	0.0%
Some Other Race Alone	133	2.4%	818	1.3%	1,517	1.0%
Two or More Races	224	4.1%	1,890	3.1%	4,364	3.0%
Hispanic Origin (Any Race)	282	5.2%	2,569	4.2%	5,356	3.6%

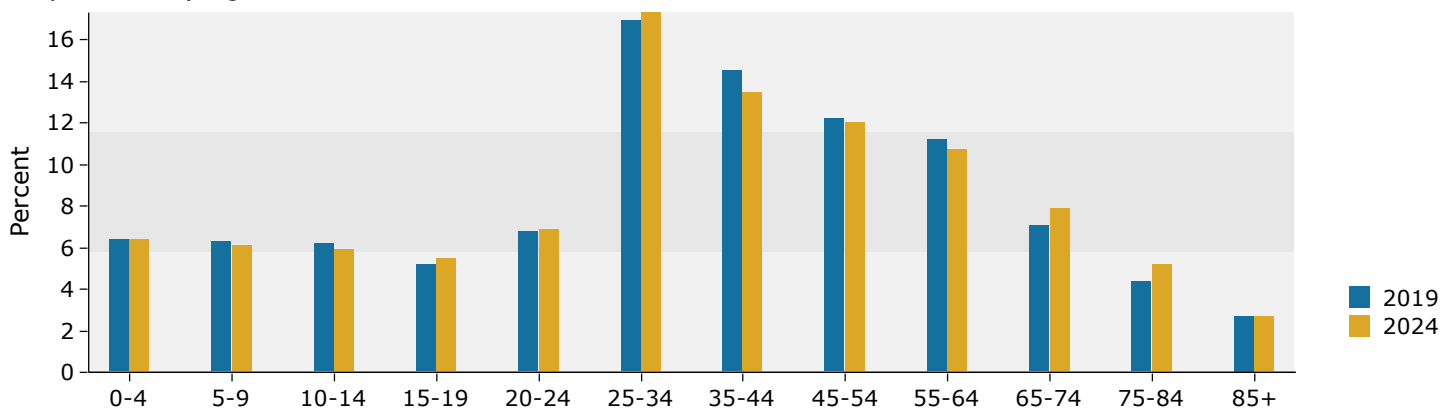
Source: U.S. Census Bureau, Census 2010 Summary File 1. Esri forecasts for 2019 and 2024.

1 mile

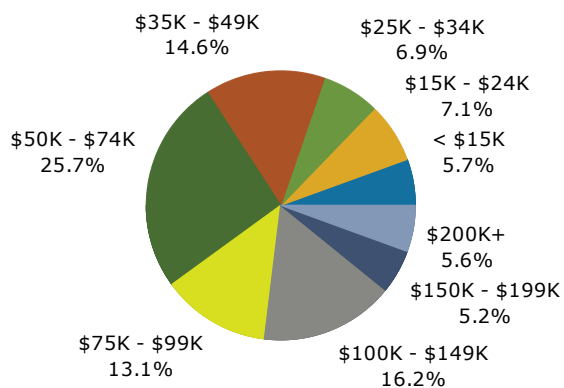
Trends 2019-2024



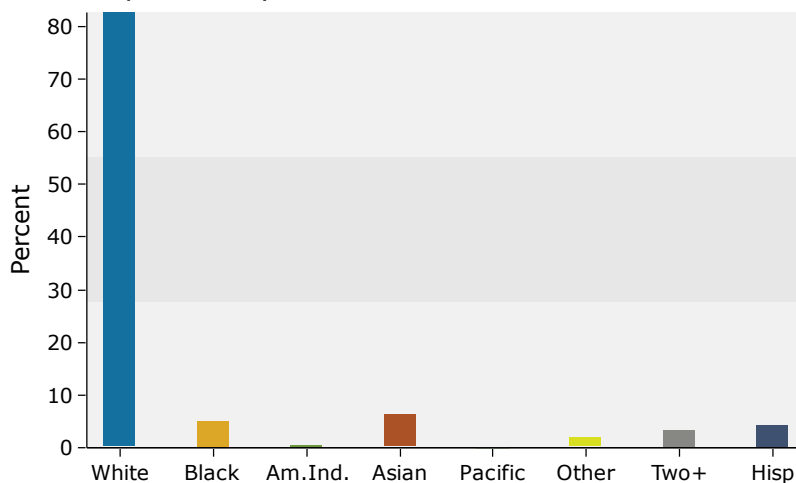
Population by Age



2019 Household Income



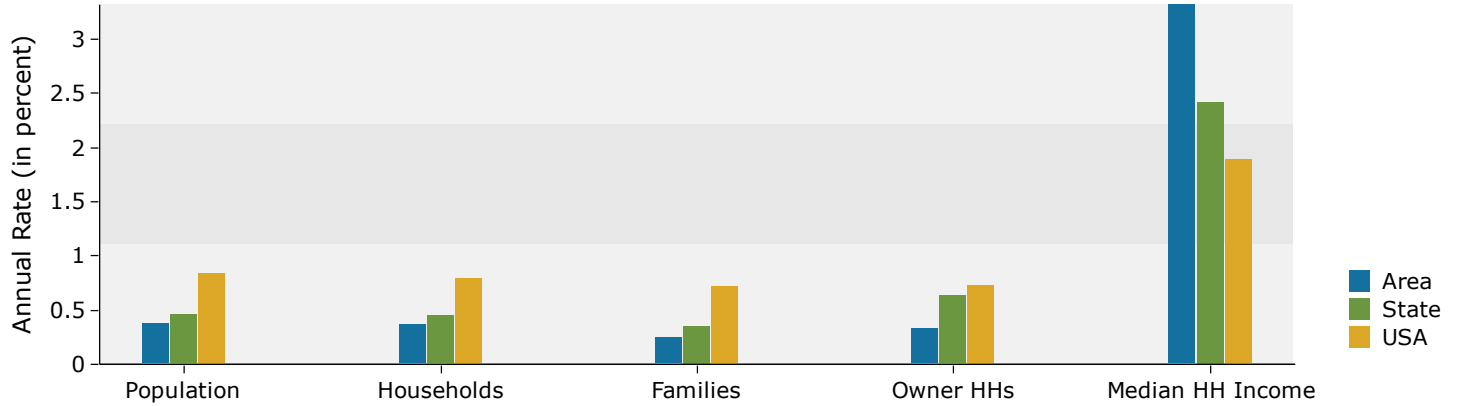
2019 Population by Race



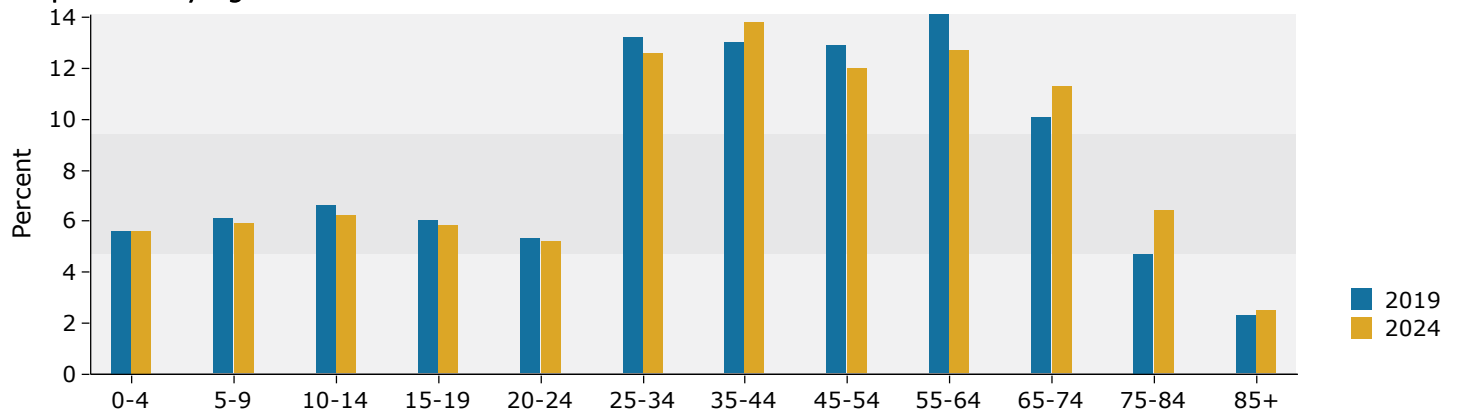
Source: U.S. Census Bureau, Census 2010 Summary File 1. Esri forecasts for 2019 and 2024.

3 miles

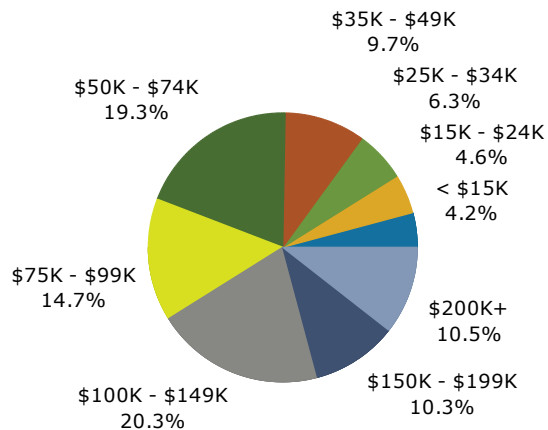
Trends 2019-2024



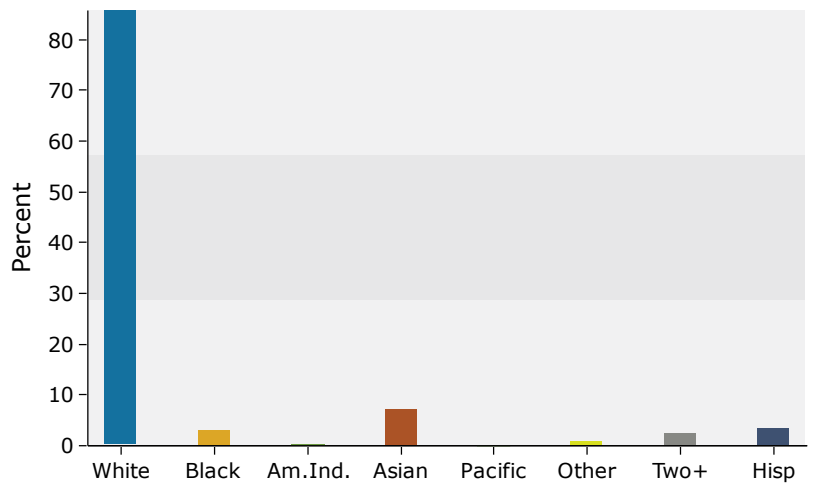
Population by Age



2019 Household Income



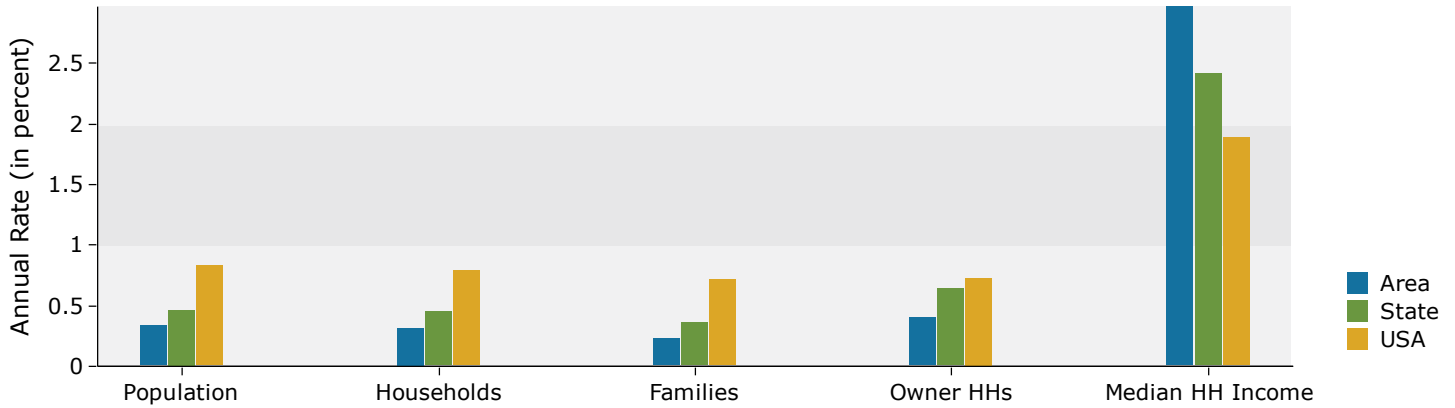
2019 Population by Race



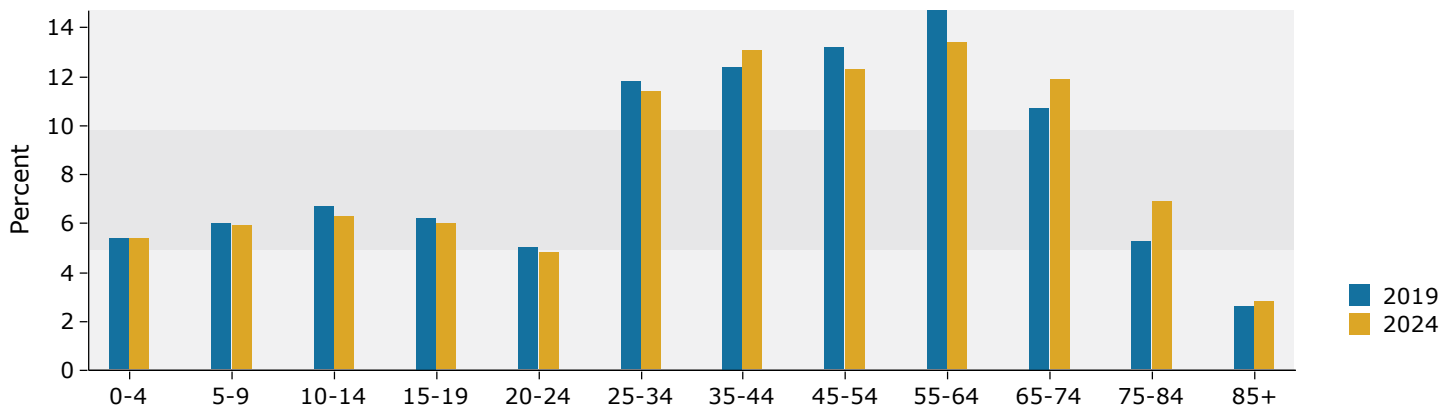
Source: U.S. Census Bureau, Census 2010 Summary File 1. Esri forecasts for 2019 and 2024.

5 miles

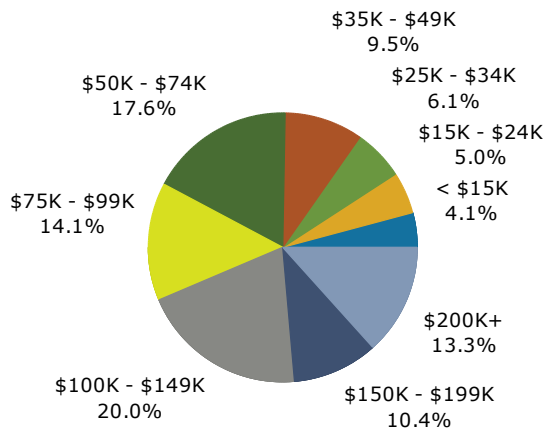
Trends 2019-2024



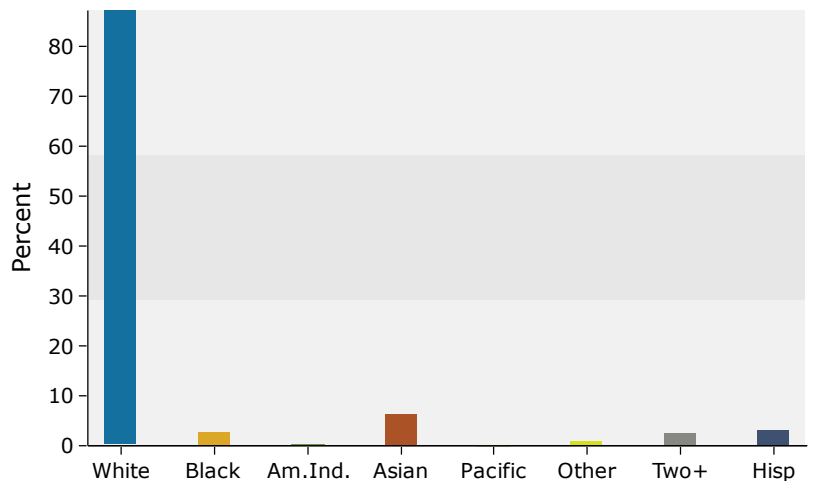
Population by Age



2019 Household Income



2019 Population by Race



Source: U.S. Census Bureau, Census 2010 Summary File 1. Esri forecasts for 2019 and 2024.