



# Demographic and Income Comparison Profile

7821 Mexico Rd, Saint Peters, Missouri, 63376  
Rings: 1, 3, 5 mile radii

Prepared by Esri  
Latitude: 38.78699  
Longitude: -90.65826

	1 mile	3 miles	5 miles
<b>Census 2010 Summary</b>			
Population	10,634	65,897	164,123
Households	3,894	23,636	59,106
Families	2,920	17,886	44,887
Average Household Size	2.73	2.78	2.77
Owner Occupied Housing Units	3,427	20,319	50,049
Renter Occupied Housing Units	467	3,317	9,057
Median Age	38.7	36.4	36.7
<b>2018 Summary</b>			
Population	12,192	74,231	181,759
Households	4,506	26,751	65,789
Families	3,341	20,075	49,529
Average Household Size	2.71	2.76	2.75
Owner Occupied Housing Units	4,051	23,128	56,260
Renter Occupied Housing Units	455	3,623	9,529
Median Age	40.0	37.7	38.1
Median Household Income	\$80,371	\$79,217	\$81,817
Average Household Income	\$93,254	\$91,831	\$97,355
<b>2023 Summary</b>			
Population	13,375	79,974	195,091
Households	4,972	28,893	70,771
Families	3,664	21,599	53,069
Average Household Size	2.69	2.76	2.75
Owner Occupied Housing Units	4,467	25,025	60,715
Renter Occupied Housing Units	504	3,867	10,056
Median Age	41.1	38.9	39.2
Median Household Income	\$90,529	\$86,753	\$90,384
Average Household Income	\$106,164	\$103,947	\$110,740
<b>Trends: 2018-2023 Annual Rate</b>			
Population	1.87%	1.50%	1.43%
Households	1.99%	1.55%	1.47%
Families	1.86%	1.47%	1.39%
Owner Households	1.97%	1.59%	1.54%
Median Household Income	2.41%	1.83%	2.01%

Source: U.S. Census Bureau, Census 2010 Summary File 1. Esri forecasts for 2018 and 2023.



# Demographic and Income Comparison Profile

7821 Mexico Rd, Saint Peters, Missouri, 63376  
Rings: 1, 3, 5 mile radii

Prepared by Esri  
Latitude: 38.78699  
Longitude: -90.65826

2018 Households by Income	1 mile		3 miles		5 miles	
	Number	Percent	Number	Percent	Number	Percent
<\$15,000	165	3.7%	1,112	4.2%	2,388	3.6%
\$15,000 - \$24,999	228	5.1%	1,471	5.5%	3,271	5.0%
\$25,000 - \$34,999	307	6.8%	1,749	6.5%	3,926	6.0%
\$35,000 - \$49,999	501	11.1%	2,826	10.6%	7,093	10.8%
\$50,000 - \$74,999	853	18.9%	5,156	19.3%	12,190	18.5%
\$75,000 - \$99,999	726	16.1%	4,777	17.9%	11,719	17.8%
\$100,000 - \$149,999	1,137	25.2%	6,288	23.5%	15,169	23.1%
\$150,000 - \$199,999	385	8.5%	2,192	8.2%	6,235	9.5%
\$200,000+	203	4.5%	1,181	4.4%	3,798	5.8%
Median Household Income	\$80,371		\$79,217		\$81,817	
Average Household Income	\$93,254		\$91,831		\$97,355	
Per Capita Income	\$34,333		\$33,198		\$35,392	

2023 Households by Income	1 mile		3 miles		5 miles	
	Number	Percent	Number	Percent	Number	Percent
<\$15,000	125	2.5%	844	2.9%	1,751	2.5%
\$15,000 - \$24,999	189	3.8%	1,193	4.1%	2,607	3.7%
\$25,000 - \$34,999	275	5.5%	1,588	5.5%	3,477	4.9%
\$35,000 - \$49,999	478	9.6%	2,672	9.2%	6,629	9.4%
\$50,000 - \$74,999	868	17.5%	5,263	18.2%	12,257	17.3%
\$75,000 - \$99,999	800	16.1%	5,240	18.1%	12,625	17.8%
\$100,000 - \$149,999	1,457	29.3%	7,775	26.9%	18,580	26.3%
\$150,000 - \$199,999	485	9.8%	2,660	9.2%	7,546	10.7%
\$200,000+	294	5.9%	1,658	5.7%	5,300	7.5%
Median Household Income	\$90,529		\$86,753		\$90,384	
Average Household Income	\$106,164		\$103,947		\$110,740	
Per Capita Income	\$39,288		\$37,668		\$40,335	

**Data Note:** Income is expressed in current dollars.

**Source:** U.S. Census Bureau, Census 2010 Summary File 1. Esri forecasts for 2018 and 2023.



# Demographic and Income Comparison Profile

7821 Mexico Rd, Saint Peters, Missouri, 63376  
Rings: 1, 3, 5 mile radii

Prepared by Esri  
Latitude: 38.78699  
Longitude: -90.65826

2010 Population by Age	1 mile		3 miles		5 miles	
	Number	Percent	Number	Percent	Number	Percent
Age 0 - 4	644	6.1%	4,530	6.9%	11,039	6.7%
Age 5 - 9	717	6.7%	4,993	7.6%	12,614	7.7%
Age 10 - 14	771	7.3%	5,270	8.0%	13,263	8.1%
Age 15 - 19	767	7.2%	4,816	7.3%	12,031	7.3%
Age 20 - 24	592	5.6%	3,561	5.4%	8,628	5.3%
Age 25 - 34	1,305	12.3%	8,425	12.8%	20,361	12.4%
Age 35 - 44	1,474	13.9%	9,845	14.9%	24,413	14.9%
Age 45 - 54	1,823	17.1%	10,679	16.2%	26,956	16.4%
Age 55 - 64	1,331	12.5%	6,968	10.6%	17,821	10.9%
Age 65 - 74	694	6.5%	3,853	5.8%	9,469	5.8%
Age 75 - 84	403	3.8%	2,186	3.3%	5,433	3.3%
Age 85+	112	1.1%	771	1.2%	2,096	1.3%

2018 Population by Age	1 mile		3 miles		5 miles	
	Number	Percent	Number	Percent	Number	Percent
Age 0 - 4	677	5.6%	4,707	6.3%	11,247	6.2%
Age 5 - 9	721	5.9%	5,018	6.8%	12,308	6.8%
Age 10 - 14	785	6.4%	5,224	7.0%	13,165	7.2%
Age 15 - 19	738	6.1%	4,694	6.3%	11,751	6.5%
Age 20 - 24	658	5.4%	3,975	5.4%	9,746	5.4%
Age 25 - 34	1,718	14.1%	10,586	14.3%	24,669	13.6%
Age 35 - 44	1,530	12.5%	10,238	13.8%	25,038	13.8%
Age 45 - 54	1,730	14.2%	10,106	13.6%	25,079	13.8%
Age 55 - 64	1,783	14.6%	9,693	13.1%	24,262	13.3%
Age 65 - 74	1,177	9.7%	6,107	8.2%	15,156	8.3%
Age 75 - 84	488	4.0%	2,831	3.8%	6,708	3.7%
Age 85+	188	1.5%	1,052	1.4%	2,630	1.4%

2023 Population by Age	1 mile		3 miles		5 miles	
	Number	Percent	Number	Percent	Number	Percent
Age 0 - 4	730	5.5%	4,979	6.2%	11,909	6.1%
Age 5 - 9	761	5.7%	5,176	6.5%	12,645	6.5%
Age 10 - 14	840	6.3%	5,462	6.8%	13,635	7.0%
Age 15 - 19	792	5.9%	4,941	6.2%	12,362	6.3%
Age 20 - 24	586	4.4%	3,568	4.5%	8,874	4.5%
Age 25 - 34	1,773	13.3%	10,886	13.6%	25,509	13.1%
Age 35 - 44	1,892	14.1%	12,096	15.1%	29,005	14.9%
Age 45 - 54	1,711	12.8%	9,902	12.4%	24,660	12.6%
Age 55 - 64	1,879	14.0%	10,194	12.7%	25,151	12.9%
Age 65 - 74	1,489	11.1%	7,724	9.7%	19,237	9.9%
Age 75 - 84	707	5.3%	3,837	4.8%	9,160	4.7%
Age 85+	216	1.6%	1,209	1.5%	2,945	1.5%

Source: U.S. Census Bureau, Census 2010 Summary File 1. Esri forecasts for 2018 and 2023.



# Demographic and Income Comparison Profile

7821 Mexico Rd, Saint Peters, Missouri, 63376  
Rings: 1, 3, 5 mile radii

Prepared by Esri  
Latitude: 38.78699  
Longitude: -90.65826

2010 Race and Ethnicity	1 mile		3 miles		5 miles	
	Number	Percent	Number	Percent	Number	Percent
White Alone	9,708	91.3%	60,135	91.3%	149,569	91.1%
Black Alone	374	3.5%	2,332	3.5%	6,162	3.8%
American Indian Alone	26	0.2%	158	0.2%	355	0.2%
Asian Alone	236	2.2%	1,439	2.2%	3,786	2.3%
Pacific Islander Alone	9	0.1%	47	0.1%	97	0.1%
Some Other Race Alone	63	0.6%	546	0.8%	1,189	0.7%
Two or More Races	217	2.0%	1,242	1.9%	2,965	1.8%
Hispanic Origin (Any Race)	235	2.2%	1,738	2.6%	4,046	2.5%

2018 Race and Ethnicity	1 mile		3 miles		5 miles	
	Number	Percent	Number	Percent	Number	Percent
White Alone	10,909	89.5%	66,346	89.4%	162,207	89.2%
Black Alone	512	4.2%	3,135	4.2%	8,167	4.5%
American Indian Alone	24	0.2%	154	0.2%	347	0.2%
Asian Alone	328	2.7%	1,993	2.7%	5,100	2.8%
Pacific Islander Alone	12	0.1%	58	0.1%	118	0.1%
Some Other Race Alone	88	0.7%	748	1.0%	1,596	0.9%
Two or More Races	319	2.6%	1,796	2.4%	4,224	2.3%
Hispanic Origin (Any Race)	329	2.7%	2,405	3.2%	5,554	3.1%

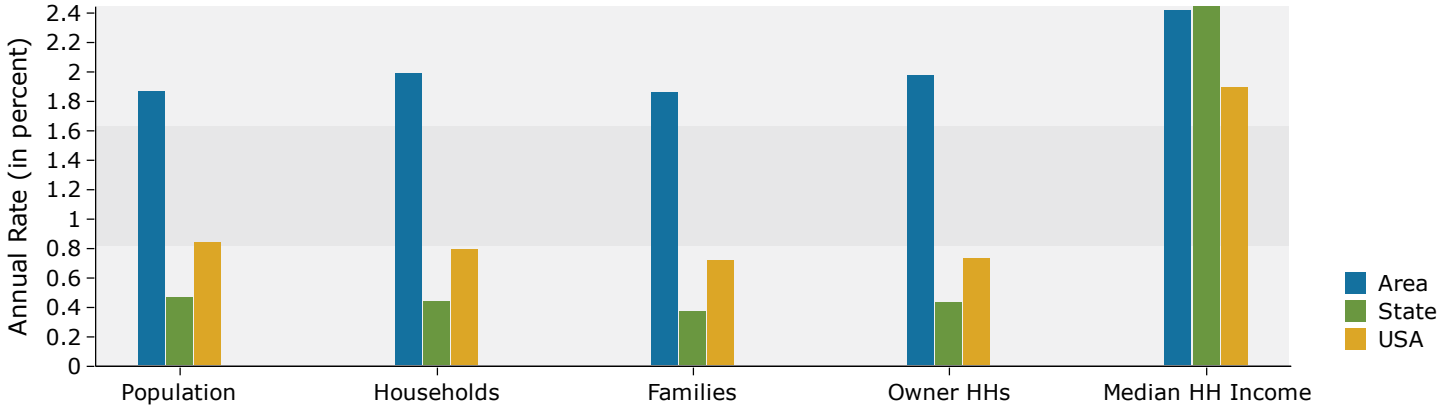
  

2023 Race and Ethnicity	1 mile		3 miles		5 miles	
	Number	Percent	Number	Percent	Number	Percent
White Alone	11,734	87.7%	70,041	87.6%	170,591	87.4%
Black Alone	652	4.9%	3,925	4.9%	10,184	5.2%
American Indian Alone	25	0.2%	160	0.2%	359	0.2%
Asian Alone	410	3.1%	2,455	3.1%	6,254	3.2%
Pacific Islander Alone	15	0.1%	71	0.1%	142	0.1%
Some Other Race Alone	117	0.9%	973	1.2%	2,055	1.1%
Two or More Races	422	3.2%	2,349	2.9%	5,506	2.8%
Hispanic Origin (Any Race)	430	3.2%	3,110	3.9%	7,167	3.7%

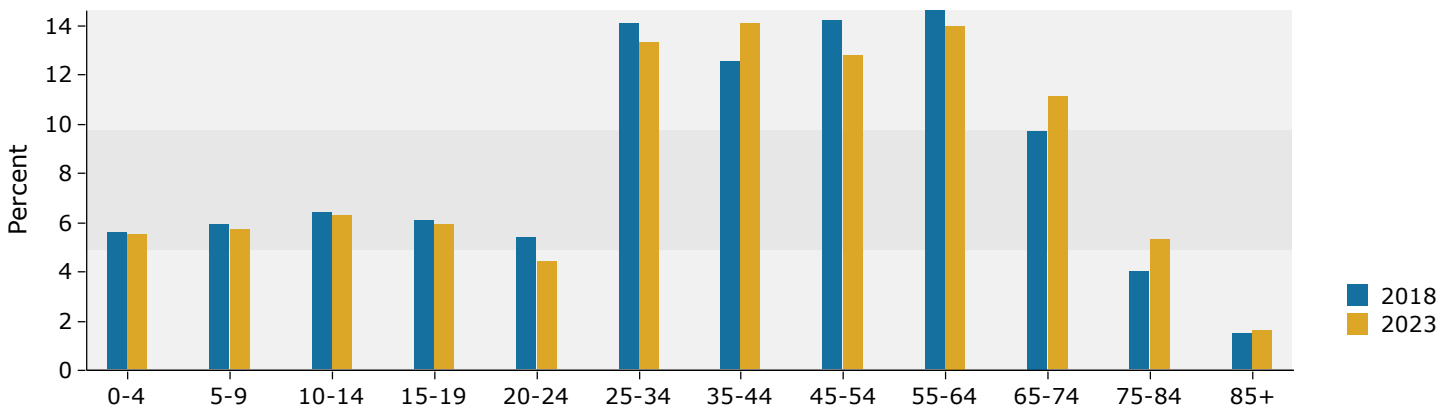
Source: U.S. Census Bureau, Census 2010 Summary File 1. Esri forecasts for 2018 and 2023.

## 1 mile

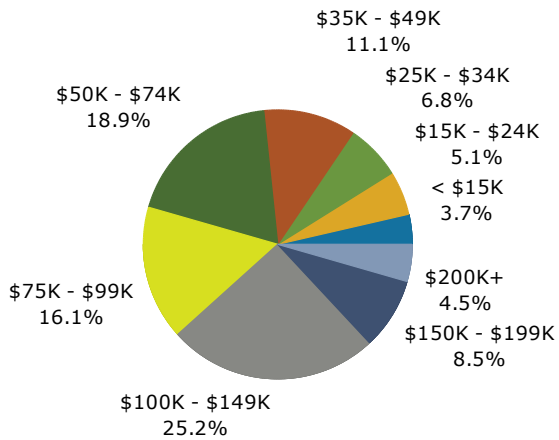
### Trends 2018-2023



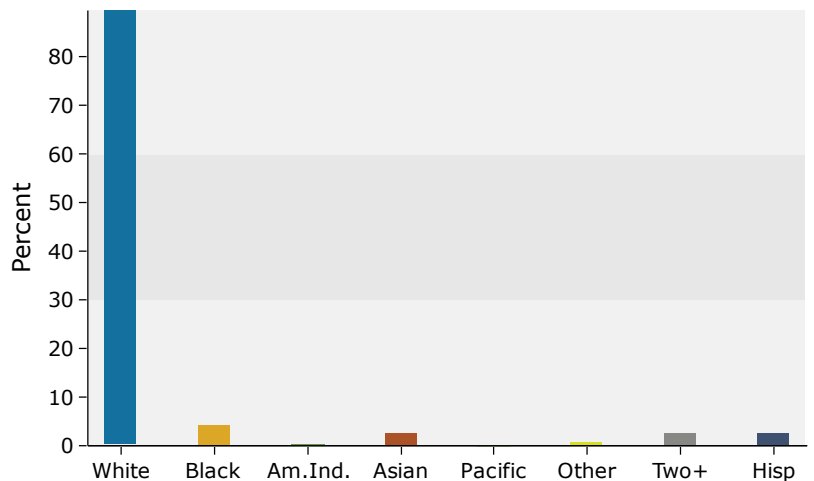
### Population by Age



### 2018 Household Income



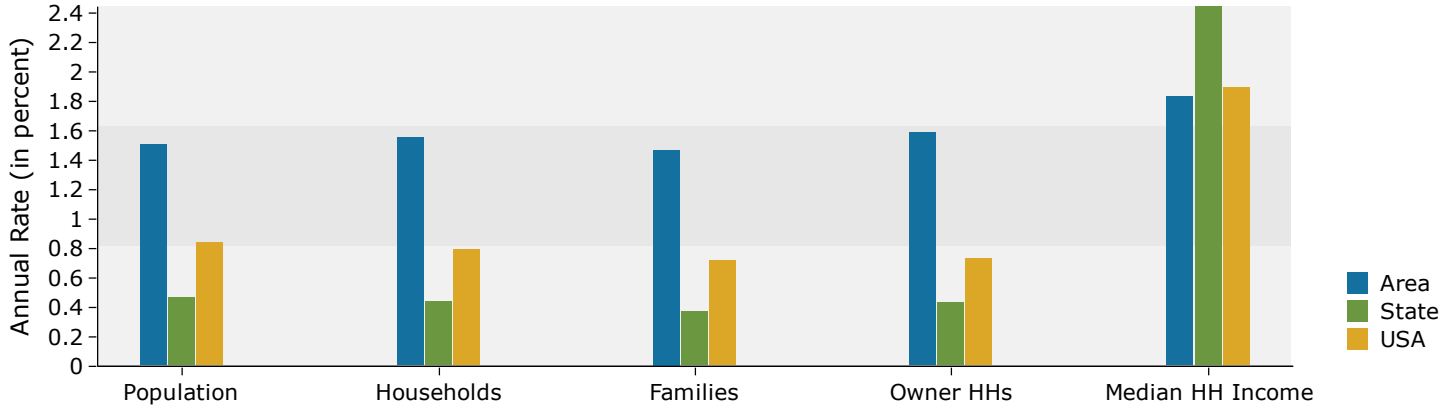
### 2018 Population by Race



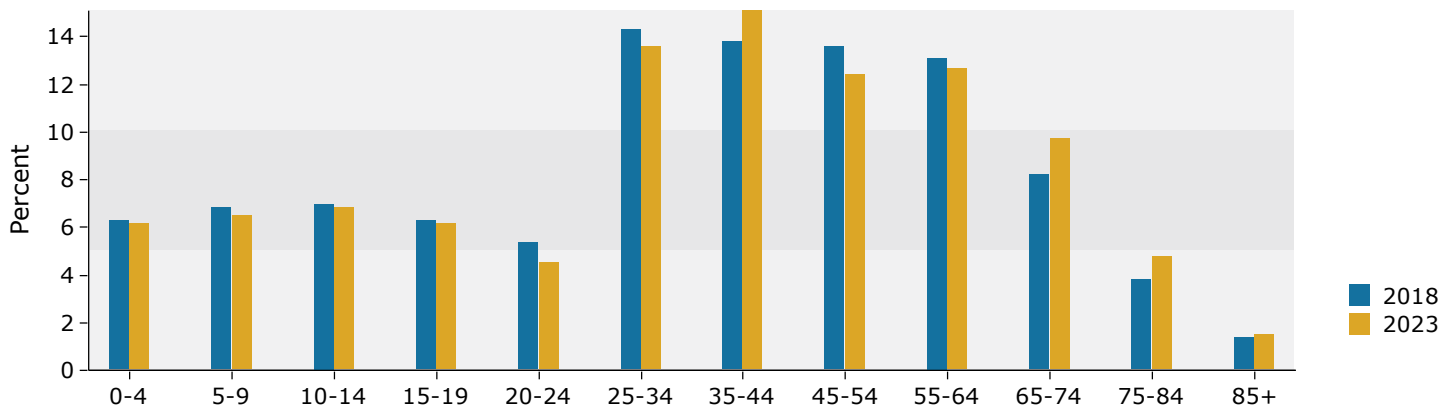
Source: U.S. Census Bureau, Census 2010 Summary File 1. Esri forecasts for 2018 and 2023.

## 3 miles

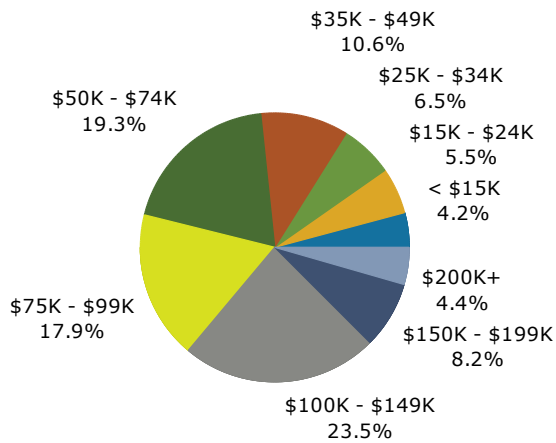
### Trends 2018-2023



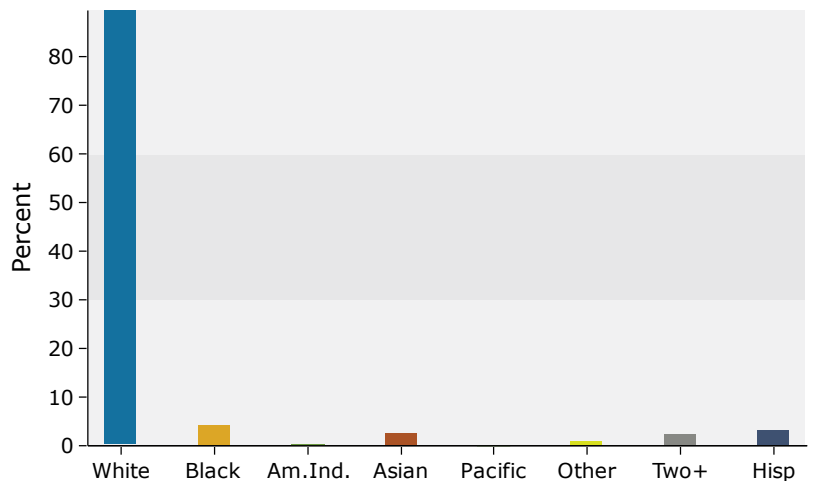
### Population by Age



### 2018 Household Income



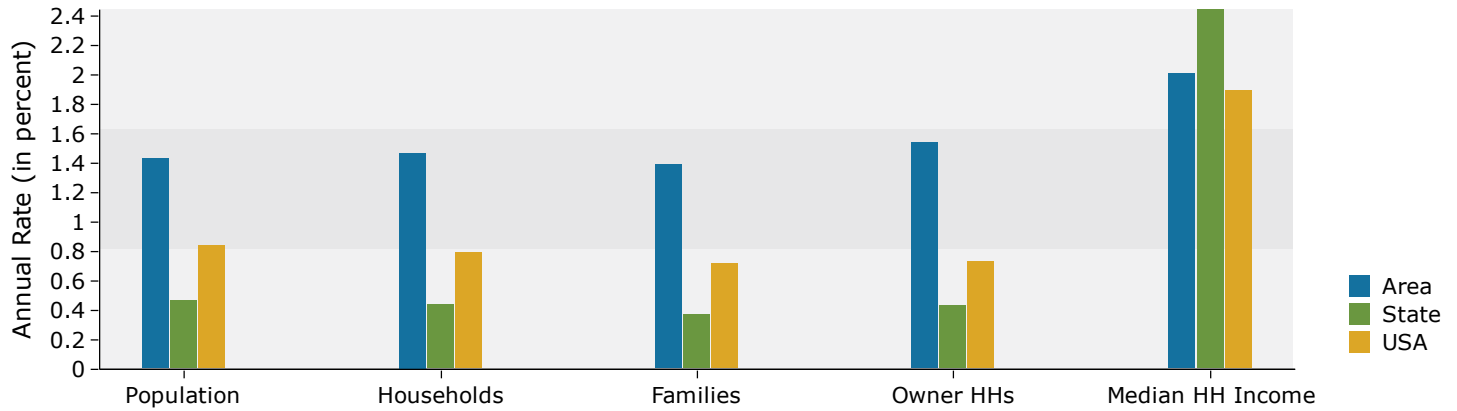
### 2018 Population by Race



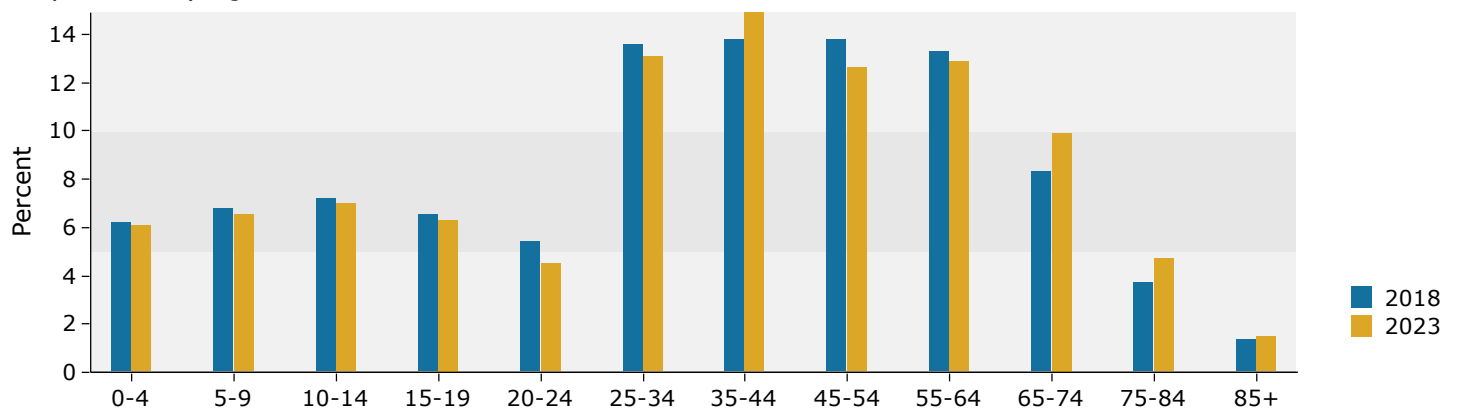
Source: U.S. Census Bureau, Census 2010 Summary File 1. Esri forecasts for 2018 and 2023.

## 5 miles

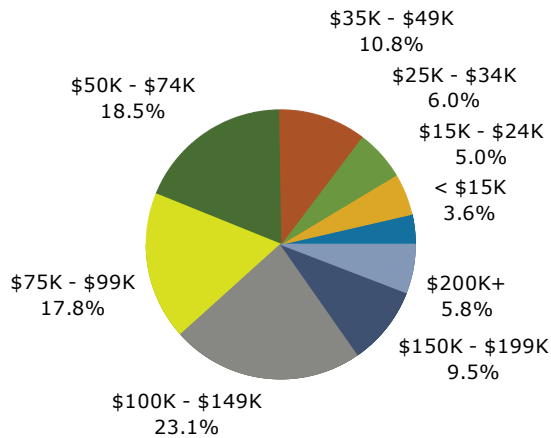
### Trends 2018-2023



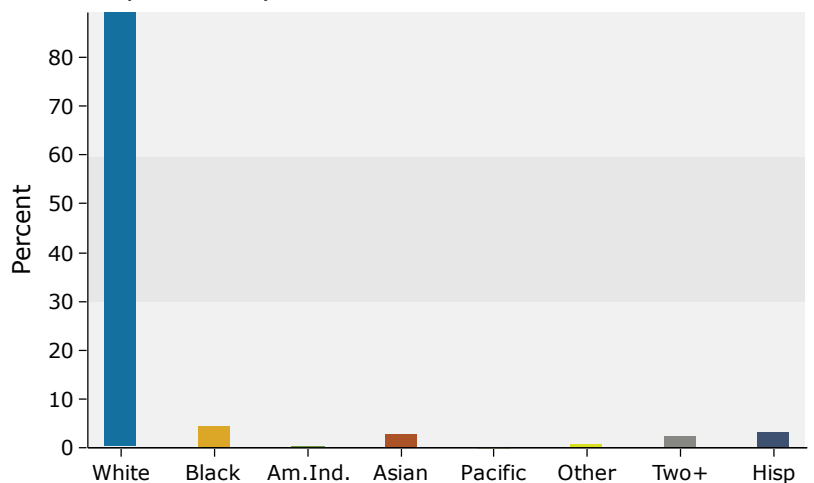
### Population by Age



### 2018 Household Income



### 2018 Population by Race



Source: U.S. Census Bureau, Census 2010 Summary File 1. Esri forecasts for 2018 and 2023.